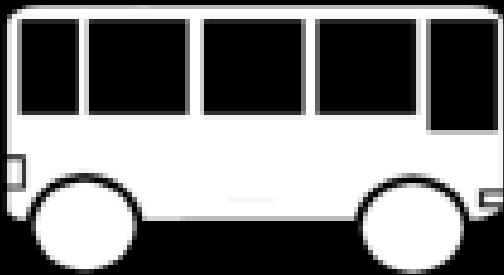
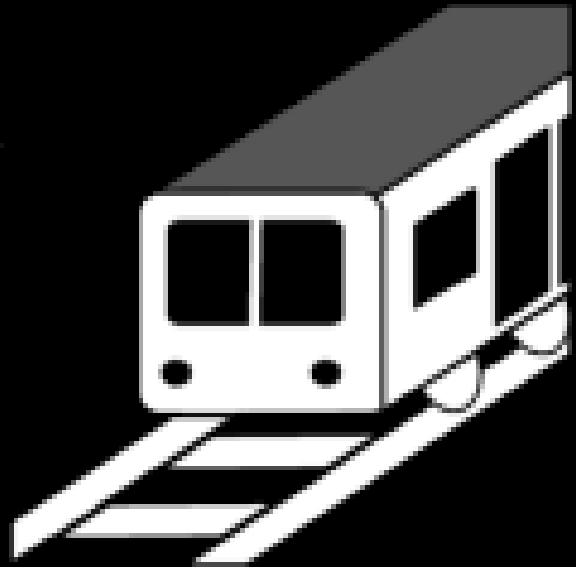
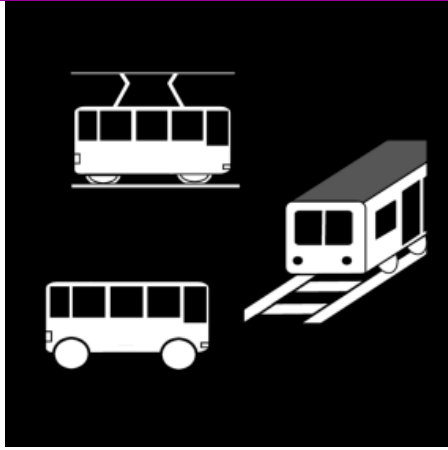


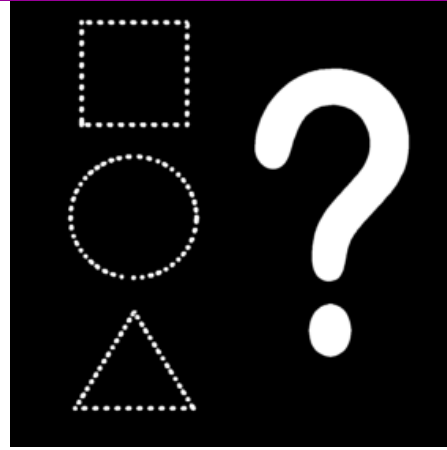
kulkuvälineitä



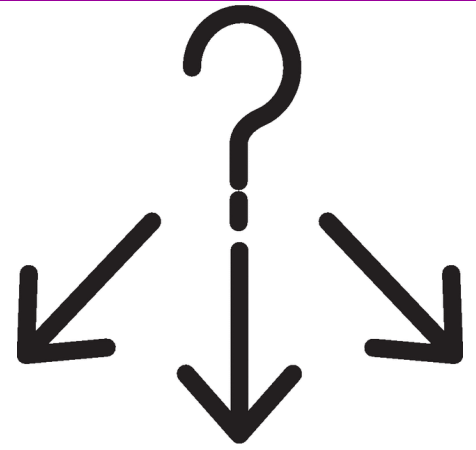
kulkuvälineitä



mikä/mitä?



missä?



millainen?



pyörätuoli



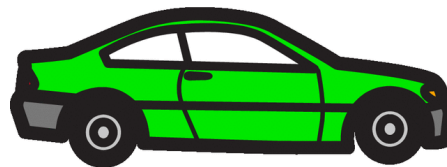
rattaat



lastenvaunut



auto



pyörä



kolmipyörä



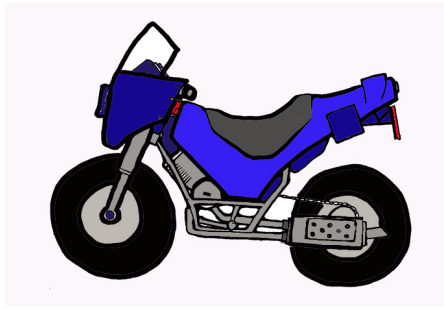
mopo



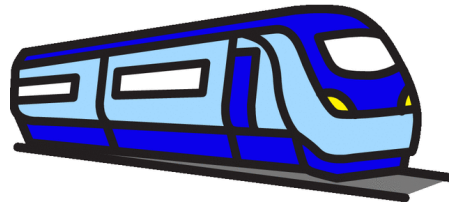
sähkömopo



moottoripyörä



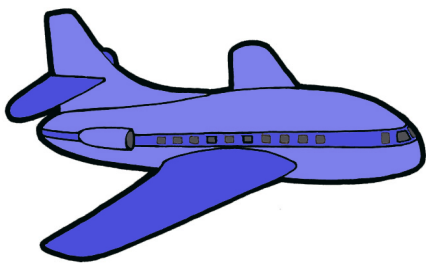
juna



bussi



lentokone



helikopteri



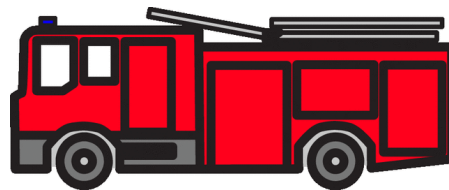
taksi



poliisi



paloauto



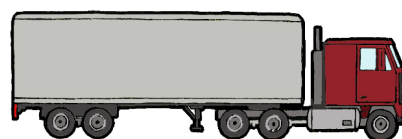
ambulanssi



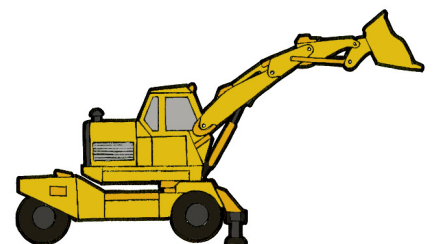
kuorma-auto



rekka-auto



kaivinkone



traktori



raivaustraktori



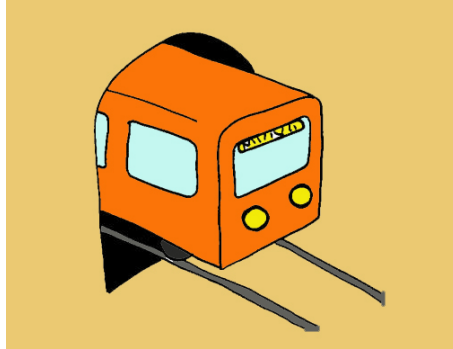
peräkärri



puimuri



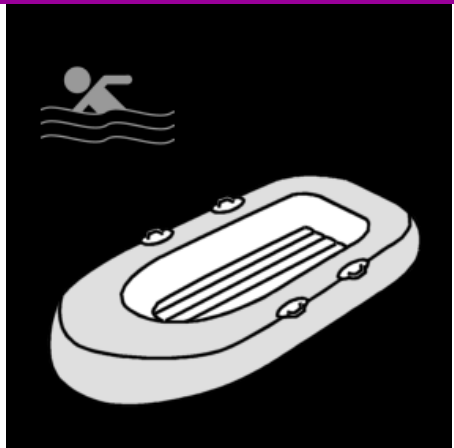
metro



raitiovaunu



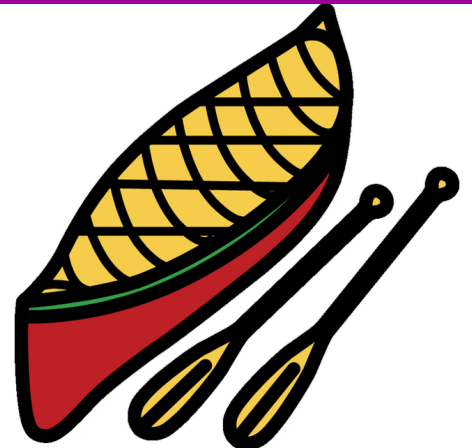
kumivene



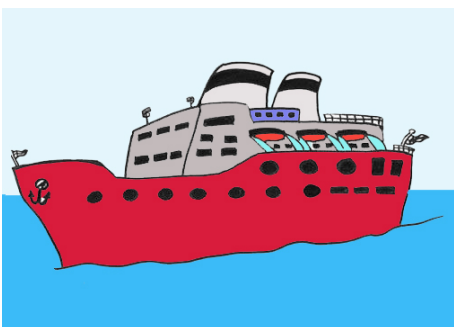
moottorivene



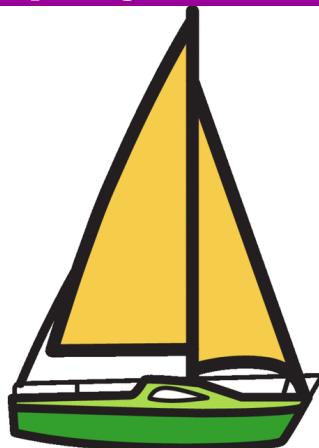
kanootti



laiva



purjevene



soutuvene

