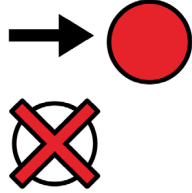


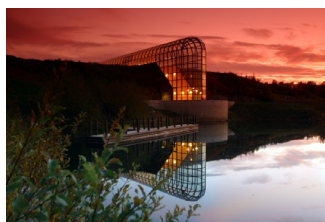
minä



joku muu



Lapin maakuntamuseo



poronhoito



kota



nahka



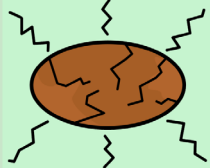
sinä



kuka?



vanha



kysyä



markkinat



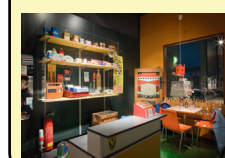
porotokka



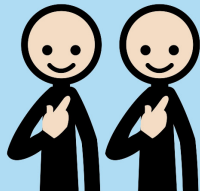
nuotio



Savukosken baari



me



milloin?



kiinnostavaa



ostaa



voi



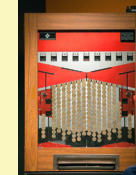
vasa



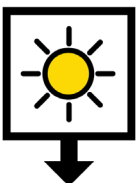
komsio



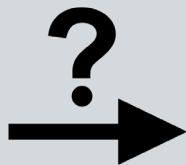
pajatto



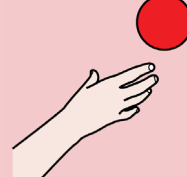
tänään



missä?



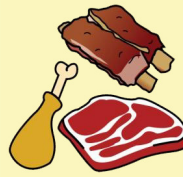
haluta



myydä



liha



jäkälä



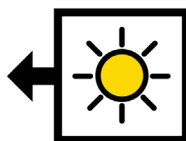
nutukkaat



limsa



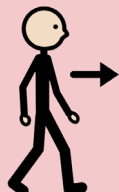
eilen



miten?



mennä



sahata



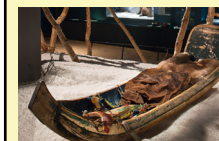
turkis



suopunki



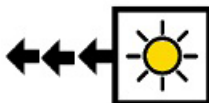
ahkio



olut



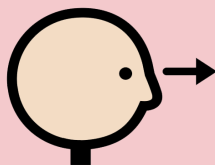
kauan sitten



mikä tuo on?



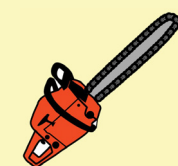
nähdä



pokasaha



moottorisaha



uitto

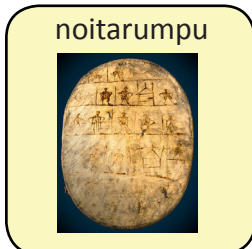
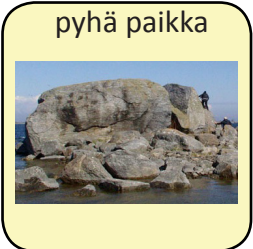
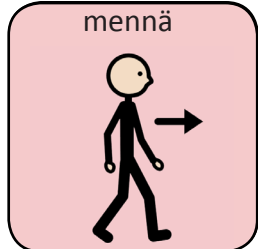
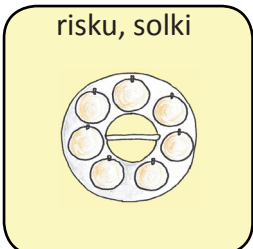
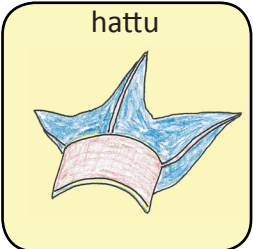
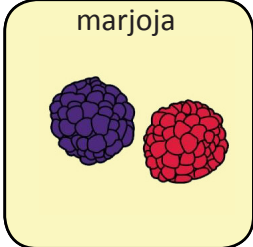
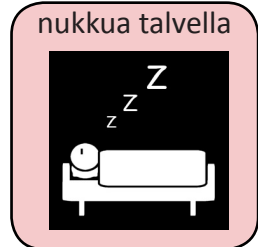
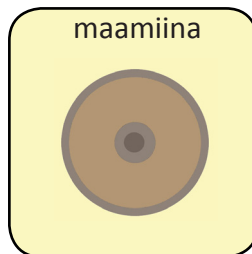
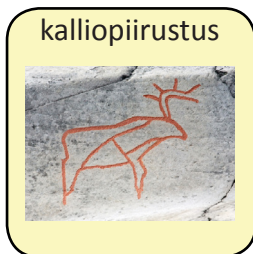
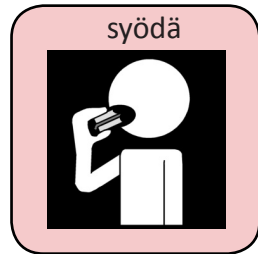
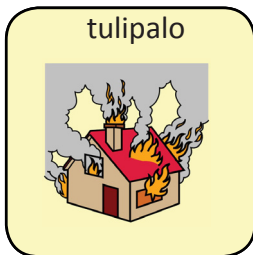
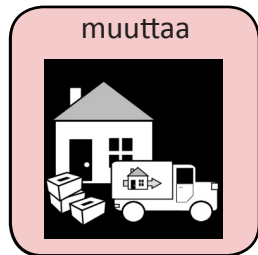


luova



traktori





Kuvataulu on tuotettu opetus- ja kulttuuriministeriön rahoittamassa hankkeessa *Kuvataulustot ja selkokielliset materiaalit museovierailun tukena (2012-2013)*. Hankkeessa tuotettiin lisäksi selkokiellinen esite museon näyttelystä.

Hankkeessa mukana:
Lapin maakuntamuseo
Suomen merimuseo
Suomen Urheilumuseo
Papunet-verkkopalveluyksikkö
Tikoteekki
Selkokeskus

Lisätietoa hankkeesta:
www.papunet.net/yksikko/projektit/saavutettavat-museomateriaalit.html

Kuvataulun voi tulostaa osoitteista
www.papunet.net/materiaalia/kommunikointitaulut
www.rovaniemi.fi/maakuntamuseo
www.kulttuuriakaikille.info

Valokuvat:
Lapin maakuntamuseo,
Ulla Isotalo, Saamelaisalueen koulutuskeskus
iStockphoto

Piirroskuvat:
ARASAAC
Sclera
Timo Moilanen